



Prevent
damage to your equipment

Ensure
quality in perishable products

Protect
your customers' health

digitherm800
Temperature remote control & recording system

digitherm800

Temperature remote control & recording system



▼ LARISSA
5 Alexandras Str. (Railway Square)
P.C. 412 23, Larissa

▼ KATERINI
3 Panagias Soumela Str.
P.C. 60100, KATERINI

▼ ATHENS
73 Tatoiou & Ch. Trikoupi Str.
P.C. 145 64, Kifissia Attica

▼ CONTACT
tel. (+30) 2416 007101
mob. (+30) 6982 306428
e-mail: info@inoperation.gr

▼ WEB
www.inoperation.gr
www.digitherm.gr

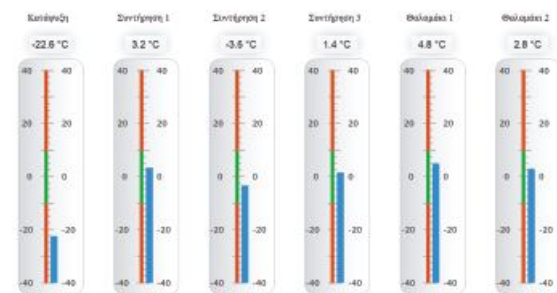
CCTV
Alarm systems
Access control
Video door phones
Tracking systems
Fire alarm systems

digitherm800

Temperature remote control & recording system

What is digitherm800?

● Digitherm800 is an innovative temperature monitoring and recording system with instant alert capability. It takes temperature measurements, sends them over Internet in the system portal, stores them in a secure database and raises an alert in case of problem. The user has continuous access to the complete log history of the monitored equipment.



Why should I use it?

- Money saving
- Refrigeration Equipment protection
- Food Hygiene Safety
- Prompt damage alert
- Remote control
- Minimal installation cost
- Minimal maintenance cost

The package includes:

- 1 Digitherm 800 device
- 1 power supply (220V)
- 8 temperature sensors
- Access to monitoring site
- Monthly reports
- SMS alert service

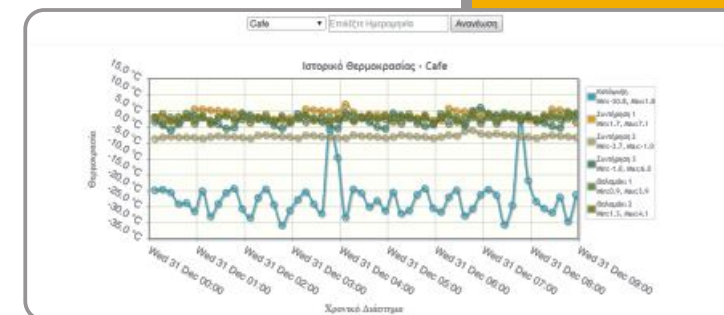


Advantages over competition

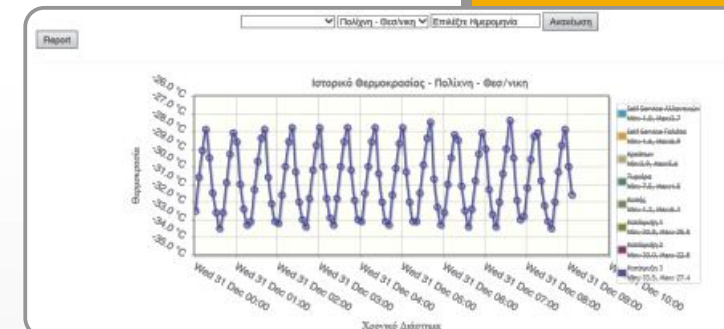
- Autonomous and integrated unit. In case of failure the user can easily and quickly detect the error through the built-in indicators. No specific knowledge or training is required.
- Easily replaceable unit. In case of failure, the device can be easily replaced due to the hand removable type of plugs used, without risk of short-circuit or electric shock.
- Very simple wiring: Central Unit, Cable, Sensors. It does not use batteries like wireless devices and not any special wiring.
- Stand alone system. It does not require any additional equipment for Internet connection, SMS sending, measurements recording etc. Everything is integrated in the device.
- Remote operation. All system parameters can be set and modified remotely without any on site configuration or local technical support. For example, parameters like communication data, e-mail, names, telephone numbers, alert limits, alert time etc can be set and modified remotely.
- On line monitoring. The user can supervise the good operation of the monitored equipment continuously through the web portal or through the daily e-mail service which is provided free of charge.
- Minimal communication cost. As all SMS are sent using an Internet service, there is no need to pay a monthly fee to a mobile provider or to top up a prepaid mobile phone in case of a GSM alert device.
- Easy management of multiple sites. Unlimited number of stores in different geographical locations can be monitored and managed through one web portal. No need to visit a different Web page for each site / store.
- Map based view of all the monitored stores and their operational status.
- User-friendly Man Machine Interface (MMI). It can be operated by anyone with basic knowledge of a Smartphone use without any specific training.
- Monitoring the good operation of the refrigerator compressor and sending alert in case of Freon lack. This is easily monitored through the online operation graphs of each refrigerator, preventing the power overconsumption and the reduction of the compressor lifespan, due to lack of Freon

Device and portal specifications

- Remote control over Internet of any refrigerator and store with unlimited data log capability. Each user has a unique username / password to the web portal, giving him direct access to its connected stores and equipment. Digital sensors are used with the proper certification.
- Predefined and tailored made report emails for each store. Numerous different reports can be defined, covering the specific needs of any user. Alternative, the user has full access to the log files and the capability to create a report for any specific time period.
- Temperature graphs can be created and exported through the web portal for each or a set of refrigerators. The user can easily add or remove refrigerators from every graph.
- SMS alert. Each sensor can be set to separately send SMS alerts to predefined values. For example, the system can be configured to send SMS to the technical / maintenance team and / or the manager of the store, including information about the name of the store and the id number / name of the thermometer (e.g. cold meats preservation) as well as the temperature at the time it was off limits. For the SMS alert, we can predefine the desirable alert temperature limit as well as the time between the excess of the limit and the alert. For example, if the limit for the freezer is -5, the SMS alert will be send only if the freezer stays at -5 for 45 minutes. This function is fully configurable by the user. There is no limit to the number of the SMS alerts recipients.
- In case of communication loss, there is an integrated memory, able to keep over 500 different measurements. The user can set the time interval between each measurement after the communication loss. The user is notified by a SMS alert that at the specific site there is a communication failure.
- The system requires an Internet connection (ADSL line) for the communication with the secure database. It can also be installed in remote areas in which there is no ADSL connection or in refrigerator trucks, using the 3G mobile telephony network.
- There is 1 relay output available, in case there is a need for a local alert notification through a beacon or a siren. The visual and sound (beacons, sirens) signaling material is not included in the package.
- All data is stored in a certified data center guarantying data security and integrity.



Ημερομηνία	Ωρα	Συντήρηση 1	Συντήρηση 2	Συντήρηση 3	Συντήρηση 4	Θυλάκιος 1	Θυλάκιος 2
2014-12-31	00:00	-22.6	3.2	-3.5	1.4	4.8	2.8
2014-12-31	01:00	-22.6	3.2	-3.5	1.4	4.8	2.8
2014-12-31	02:00	-22.6	3.2	-3.5	1.4	4.8	2.8
2014-12-31	03:00	-22.6	3.2	-3.5	1.4	4.8	2.8
2014-12-31	04:00	-22.6	3.2	-3.5	1.4	4.8	2.8
2014-12-31	05:00	-22.6	3.2	-3.5	1.4	4.8	2.8
2014-12-31	06:00	-22.6	3.2	-3.5	1.4	4.8	2.8
2014-12-31	07:00	-22.6	3.2	-3.5	1.4	4.8	2.8
2014-12-31	08:00	-22.6	3.2	-3.5	1.4	4.8	2.8
2014-12-31	09:00	-22.6	3.2	-3.5	1.4	4.8	2.8



Ημερομηνία	Ωρα	Συντήρηση 1	Συντήρηση 2	Συντήρηση 3	Συντήρηση 4	Θυλάκιος 1	Θυλάκιος 2
2014-12-31	00:00	-22.6	3.2	-3.5	1.4	4.8	2.8
2014-12-31	01:00	-22.6	3.2	-3.5	1.4	4.8	2.8
2014-12-31	02:00	-22.6	3.2	-3.5	1.4	4.8	2.8
2014-12-31	03:00	-22.6	3.2	-3.5	1.4	4.8	2.8
2014-12-31	04:00	-22.6	3.2	-3.5	1.4	4.8	2.8
2014-12-31	05:00	-22.6	3.2	-3.5	1.4	4.8	2.8
2014-12-31	06:00	-22.6	3.2	-3.5	1.4	4.8	2.8
2014-12-31	07:00	-22.6	3.2	-3.5	1.4	4.8	2.8
2014-12-31	08:00	-22.6	3.2	-3.5	1.4	4.8	2.8
2014-12-31	09:00	-22.6	3.2	-3.5	1.4	4.8	2.8

